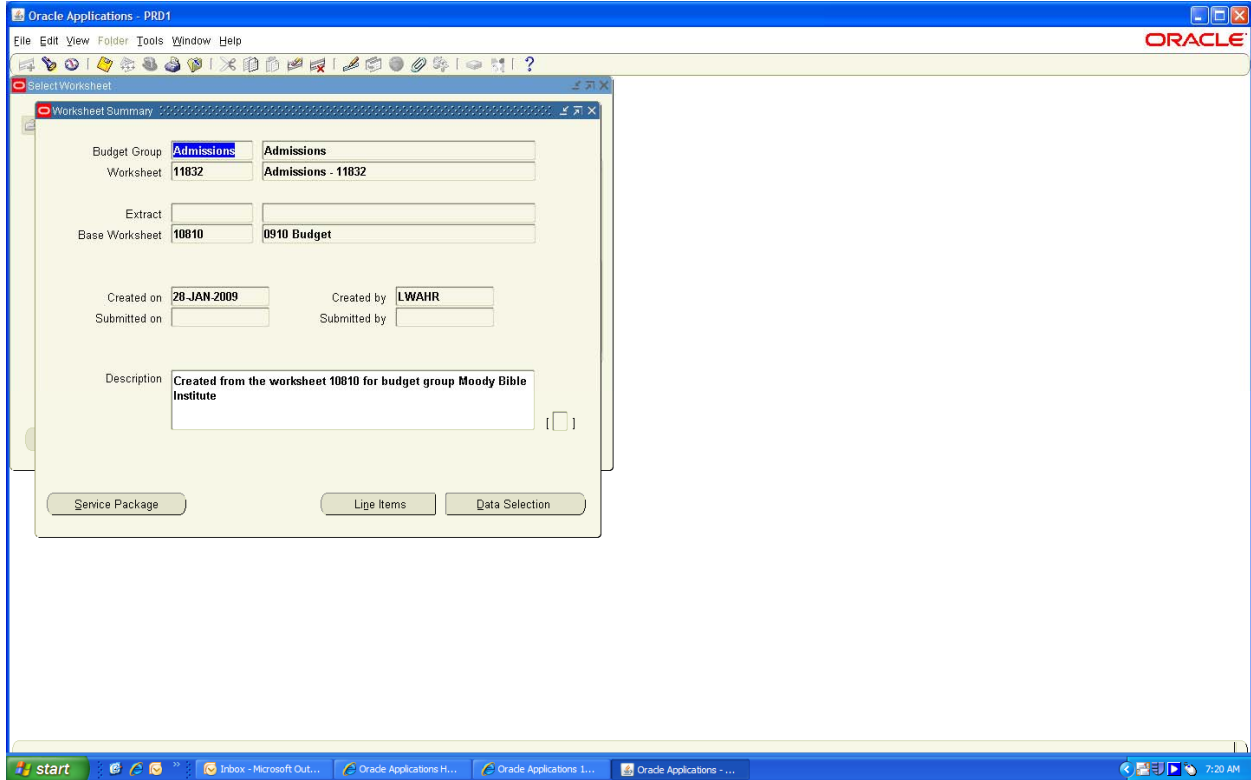
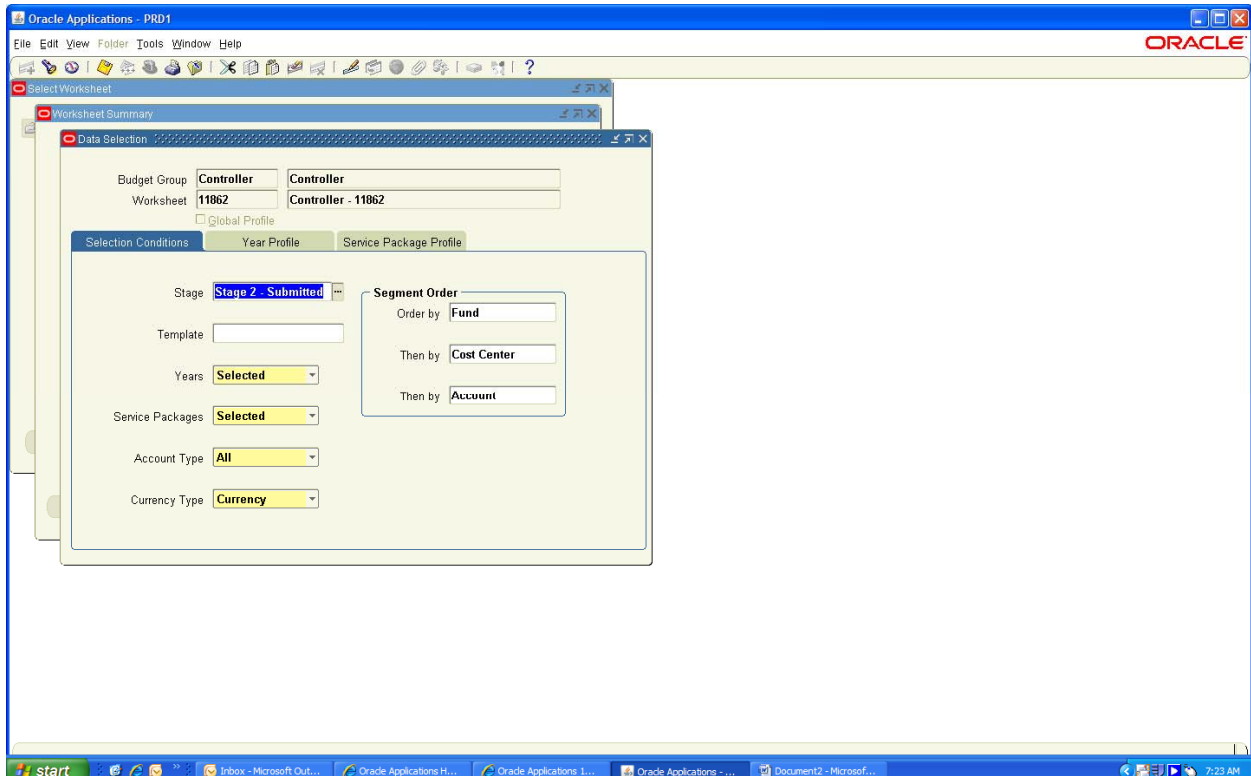


Go into Worksheet than Modify. Pick your worksheet and say open and this screen appears, **but instead of hitting Line Items pick Data Selection.**

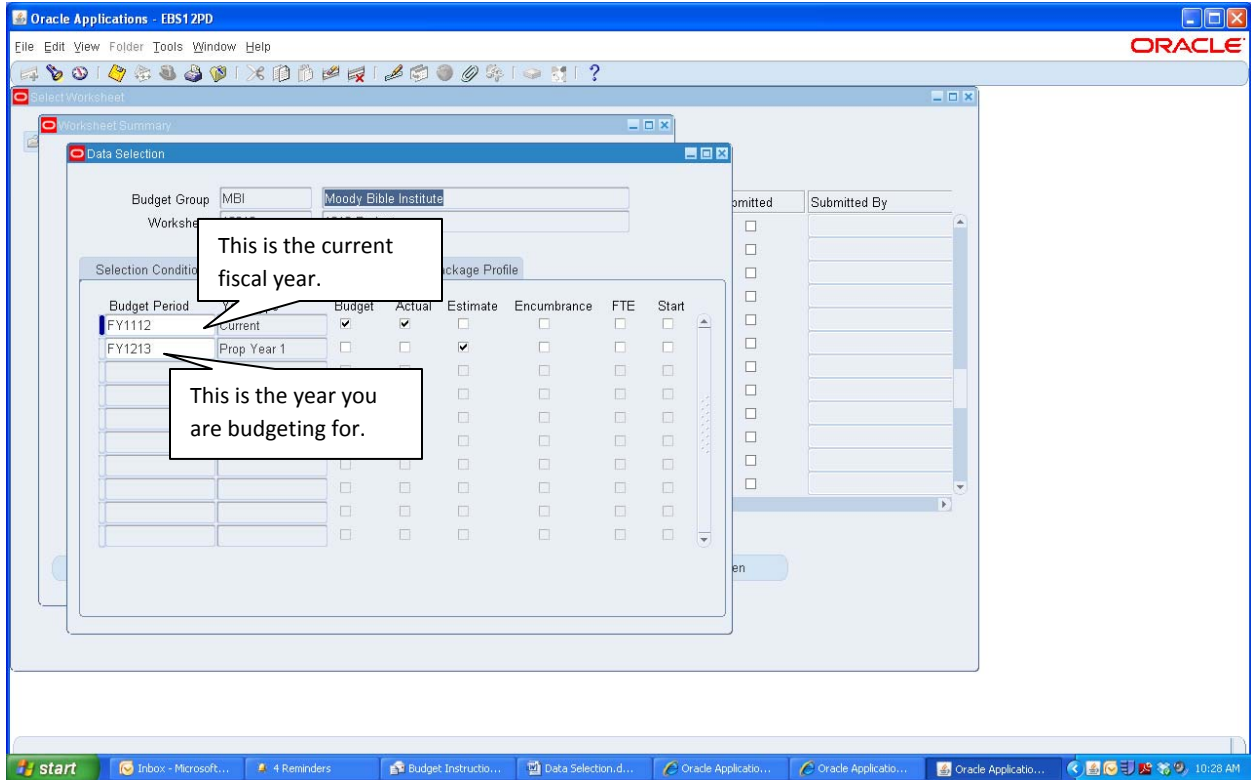


Next you need to set up two tabs within data selection to look like the screens below:



This is the selection conditions tab. When you put your cursor in a box there will be a drop down list available by hitting the three dots (...). Then switch to the Year Profile and make it look like this the screen on the page.

The first row the year must be the current fiscal year. The second row is the year budgeting for.



SAVE YOUR CHANGES. You should not have to do this again if you save.